



WORLD CUP LOUNGE | TE IPU O TE AO

L4, SAMSUNG SOUTH STAND

Reimers Ave, Kingsland | Gate G

ABOUT THE VENUE

Our most versatile, modern and popular space. It has removable walls throughout the room offering the ability to split the space into two rooms with two separate guest entrances. The World Cup Lounge has abundant natural lighting from two sides of the stand and offers two private bars for convenient service.

The 400sqm balcony is the perfect spot for breaks, networking and fresh air overlooking New Zealand's National Stadium.

Pack in is from South Stand service lift, accessible through Gate Q.

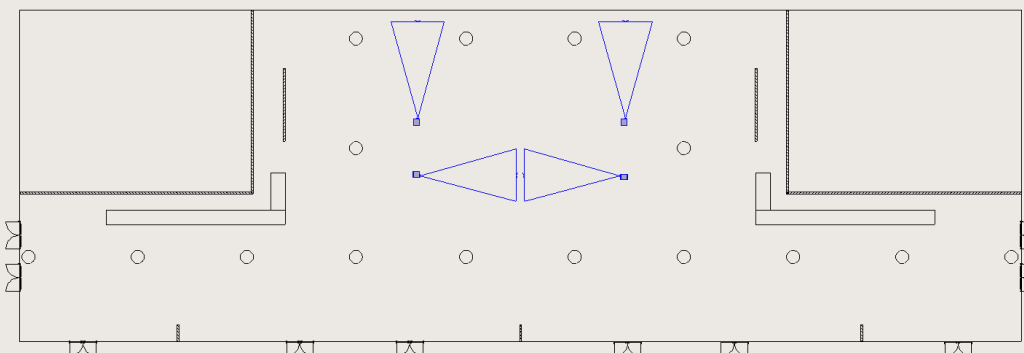
AUDIO VISUAL

The lounge has quality installed equipment and can easily be supplemented to bring your event to life by our in-house suppliers Vidcom.

Installed in the lounge are;

- Two 10,000 lumen laser projectors and 140inch screens
- Overhead eight speaker sound system
- Overhead stage wash lighting
- Sixteen overhead moving lights
- Installed TVs on the pillars and behind the bars

VIDCOM
Bring Your Event To Life



NEW ZEALAND'S NATIONAL STADIUM

BANQUET

500 guests



THEATRE STYLE

500 guests



CABARET

320 guests



COCKTAIL

950 guests



CEILING HEIGHTS

From
2,700 - 3,600 mm

FLOOR SPACE

1,106 sqm +
foyers & balcony